

# Facelift for 113-year-old

By JIM THOMPSON  
Assistant News Editor

One of the grandest ladies in Walton County, who also calls Barrow County home, is getting a facelift. It's a facelift that will require such exotic beauty equipment as floor jacks, chains and concrete.

The "lady" is 113 years old, over 100 feet long, and resides in a wooded section of northern Walton County, stretching over the Apalachee River into southern Barrow County. She is known as the Kilgore Mill Covered Bridge.

The bridge, which has sustained damage from logging trucks which occasionally cross over her, according to Walton County Commission Chairman B.R. Anderson, is receiving her facelift courtesy of the county governments in the two counties she serves. The counties have agreed to roughly split the estimated cost of \$2,500 to repair the bridge, with Barrow County providing an additional \$300 for concrete to shore up a bridge abutment on its side of the bridge. Walton County will provide four steel posts to be placed on either side of the bridge. The posts will restrict access to the bridge, allowing only sufficiently narrow vehicles to pass over the span. In

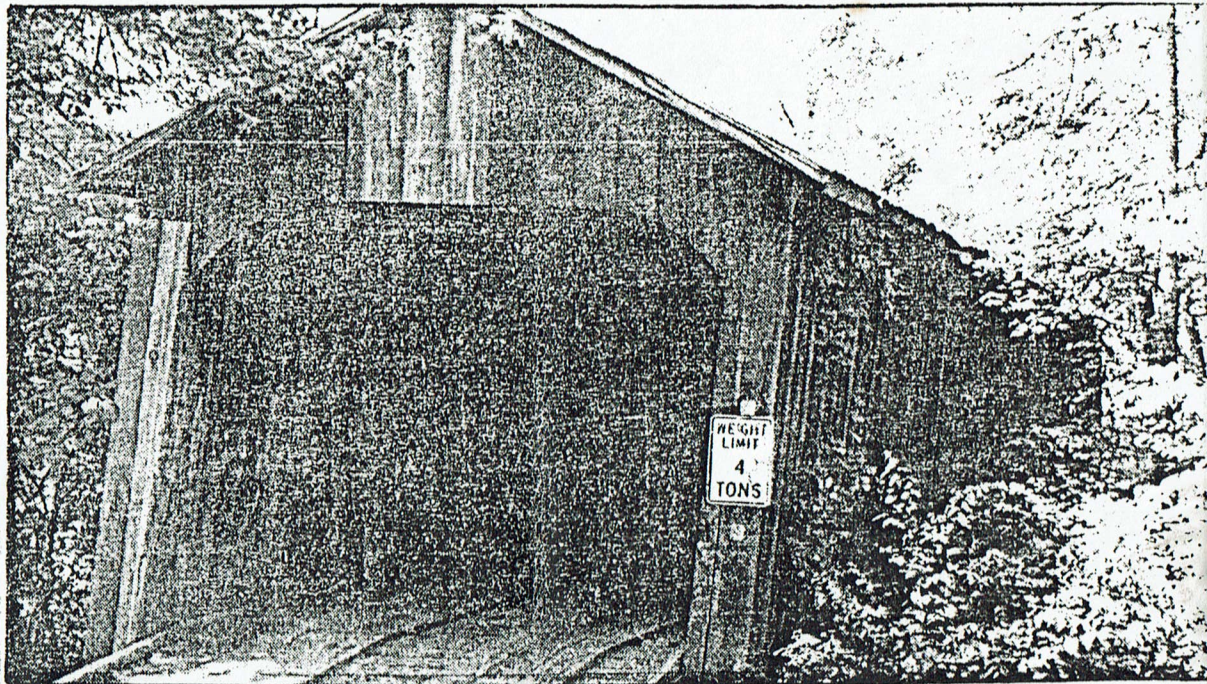
the past, wide trucks using the span have damaged the four wooden support beams on either side of the bridge.

The bridge is being repaired by Hall Construction Company, which is actually two young DeKalb County men, Jeff Hall and Scott Rogers. Hall said he was recommended for the job by an official of the Northeast Georgia Area Planning and Development Commission (NEGAPDC). Hall has done repair work for the NEGAPDC in the past, and was low bidder for the bridge repair project.

At the bridge site Thursday, Hall said the first order of business for repairing the bridge was the replacement of a rotted wooden sill supporting the bridge on the Barrow County side. Hall said he expected to have the sill replaced by Friday.

The next order of business will be replacing three of the four wooden lateral support braces in the bridge interior. According to Hall, one of the support beams had been broken completely in half.

When the braces are replaced, Hall and Rogers will use chains to pull the bridge



KILGORE MILL COVERED BRIDGE, which Barrow County line near Highway 11, is receiving some much-needed attention this week.

back into plumb. Hall said the Barrow County side of the bridge is leaning inward almost 10 inches across the front. He said he expected to have this work completed early this week. "It just depends on how willing the boards are to shift," Hall said.

Hall and Rogers said they also plan to replace some of the boards along the sides and the top of the bridge entrance. Large chunks of the boards have been broken away, appar-

ently by vehicles either too wide or too high to negotiate the span safely. Hall said he plans to complete the entire project sometime this week.

THE WALTON TRIBUNE

May 25, 1988